



## Main Manual

### i. Production Overview

1. Product Content
2. Product Appearance

### ii. Features

### iii. Illustrated Operating Instructions

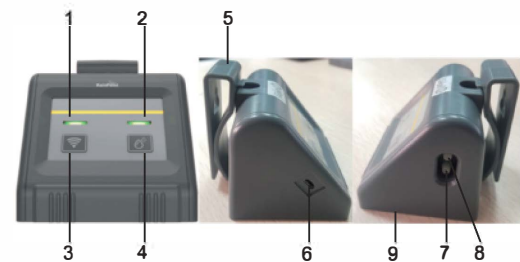
1. Button and Indicators Introduction
2. Manual Operation
3. Automatic watering program setting
4. No Water Alarm
5. Manual Watering Function on App
6. Battery Status

### iv. Basic Parameters of the device

### Áttekintés

1. Csomag tartalma Water Timer Pump x 1 ; USB Cable x 1 ; User Manual x 1 ; 1/4" Tubing (10m) x 1 ; Micro Drip Emitters x 10 ; T Barb Fitting x 10 Cross Barb Fitting x 3 ; Straight Barb Fitting x 3 Tubing End Caps; x 3 ; Filter x 1 ;

### 2. Product Appearance



- |                                |                         |
|--------------------------------|-------------------------|
| (1) Wi-Fi working indicator    | (6) USB input port      |
| (2) Watering working indicator | (7) Water Out port      |
| (3) Wi-Fi                      | (8) Water In port       |
| (4) Manual Button              | (9) Battery Compartment |
| (5) Akasztó                    |                         |

### Tulajdonságok

- Wi-Fi connection, App control, monitor and check watering plans anywhere.
- Easily watering the plants without connecting with a tap.
- Simple installation, only take 10 minutes to complete the setup.
- Watering regularly, better for the growth of plants.
- Low noise during the watering.
- Small size, easy to carry.



Please use clear water and copper filter (included in kit), otherwise will damage the pump.

### Illustrated Operating Instructions

#### 1. Button and Indicators Introduction

Working Indicators	Indicator Status	What does it stand for ?
Left LED light	Quick Flashing:0.5s on, 0.5s off	USB input connected, ready for pairing or failed to be paired
	Slow Flashing:1.5s on, 1.5s off	USB input connected,Sourcing for Wi-Fi connections
	Constantly lights on	With USB input connected, and Paired successfully with Smart phone
	On 0.5s, Off 3s	Powered by batteries
Right LED light	On 3s, Off 3s	Low power of batteries
	Constantly lights on	Watering
	Quick Flashing:0.5s on, 0.5s off	No water warning

- Wi-Fi Button: Press and hold to activate the Wi-Fi connection.
- Manual Watering Button: Press once to start watering, press again to stop.

### 2. Power On

Install Batteries, the Wi-Fi Working Indicator will flash alternately, 0.5s on and 3s off.

### 3. Manual Operation

\*Press once to start manual watering, press again to stop it immediately.

### 4. Automatic watering program setting

Search " Rainpoint " in the App store/Google Play or Scan the following QR code to download and register an user account.



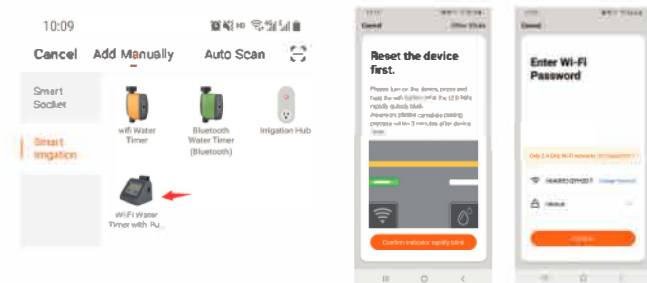
4.1 \* Insert USB input, the Wi-Fi Working Indicator will "Quick Flashing", which means ready for pairing.



### Figyelem!

Only can activate the Wi-Fi connection and have watering schedule set after USB Input insert. No USB Input, No Wi-Fi connection and No watering schedule available.

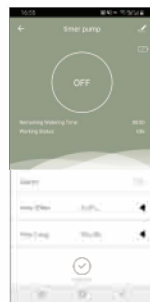
### 4.2\* Open the App, choose the pump timer and connect.



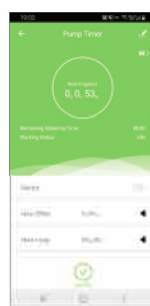
### 4.3\* Sikeres csatlakozás



4.4\* Will see the following page after clicking "Done". In this page, "Battery status", "Remaining Watering Time", "Working Status", "Switch Status", "How Often" and "How Long" are listed.



4.5\*Set How Often: range from 1H - 7Days  
Set How Long: range from 6S - 30Min  
Tap "Auto Run" to start Automatic watering schedule



(For example: the above watering schedule shows watering every hour with watering duration of 30s each time.)



4.5\* After watering started, the "Working Status" will change to "Auto", and "Remaining Watering Time" will display countdown of watering duration.

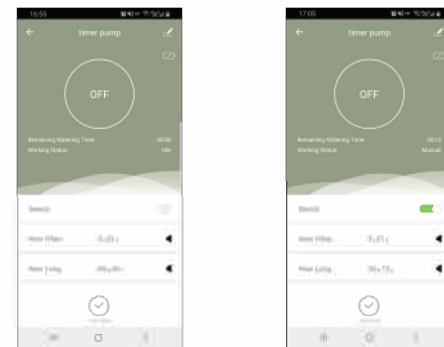
**Note:** Each time when change the setting of "How Often", pump timer will start to watering for one time first. Then continue watering plans as scheduled.

### 5. No Water Alarm

When it appears "No Water" on the APP, please check if it's short of water in the tank and fill enough water in time. The pump timer will keep working as scheduled.

### 6. Manual Watering Function on App

\*Set "How Often" and "How Long", then Tap the "Switch" to start Manual Watering



### 7. Battery Status

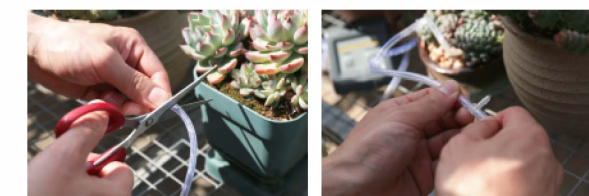
Battery Status will be displayed as following:

- Full
- Low Power
- No Battery



After schedule set, the plan will keep working with batteries powered even if the USB input removed.

### The Installation of accessories



\*\* Insert the filter to the pipe and put it into the water tank, insert the other side of the pipe to the "IN" port of the pump timer. Insert the drip line pipe to the "OUT" port of the pump timer. \*\*

- USB: Micro USB
- Üzemi nyomás: 0.3 bar
- Vízhozam: 30 l/h
- Vízállóság: IPX2
- Pumping head: ≤ 3 m
- Pumping distance: ≤ 3 m
- Maximum víznyomás: ≥ 200 kPa
- Üzemi hőmérséklet: 0°C - 50°C
- 4\*AA elem (élettartam kb. 1 év)
- Anyag: ABS